



THE TRAVELER

LINCOLN HIGHWAY ASSOCIATION – CALIFORNIA

www.lincolnhighway.org/ca/traveler

Published Quarterly



Volume 22, Number 3

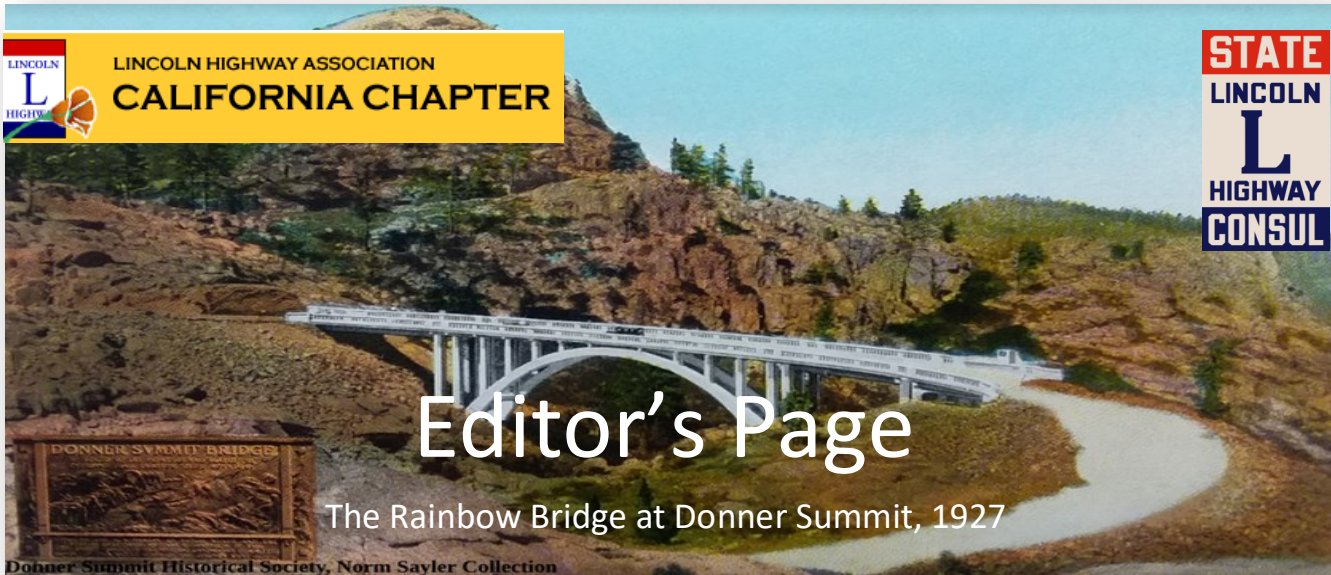
Summer 2021

***It's Summer, and time for a road trip!
Explore the Lincoln Highway.***



While this is labeled the Lincoln Highway, it's more likely the connection between South Lake Tahoe and Truckee. This section was part of the [Wishbone Tour](#), which is described in great detail at the link.

**Upcoming Chapter Meeting , July 10th
See Page 7**



Editor's Page

The Rainbow Bridge at Donner Summit, 1927

Donner Summit Historical Society, Norm Saylor Collection



Trey Pitsenberger
 Editor

Summer is here, and it's time to get out and explore the Lincoln Highway. My wife Monica and I live in the Sierra Foothills, where the summers can get very hot. So, to get some relief and tickle our adventurous sides, we head to the high country of the Sierra Nevada. Both California Lincoln Highway routes, Scenic and Pioneer, cross the Sierra Nevada through some of California's most spectacular scenery. One such place is Big Bend, along the Scenic or northern route at about 5000-foot elevation. It's cooler up here and plenty to explore in a small area. We even recently painted a Lincoln Highway "L" there. See if you can find it—more about Big Bend on Page 9.

Our chapter's summer meeting is on the horizon, July 10th. The meeting is along the longest remaining stretch of Lincoln Highway Concrete in California. Built by chain gangs from Folsom Prison, you can walk this historic route and see how many "C" Markers you can find. The Lunch is provided by our host, Moe Mohanna, who hopes to one day develop his land. He wishes to work with the Association to maintain and preserve this historic highway. We appreciate his enthusiasm and willingness to help us with our goal. The views from the event center are spectacular, overlooking Sacramento and

(continued next page)



The signage crew has been busy repairing and placing new Lincoln Highway signs and monuments. Besides the two repairs Joel writes about in this newsletter, the signage crew also completed the following projects



The photos above show the repair to the 1999 replica marker at Big Bend. We removed the chipped paint and added fresh paint—this marker is behind the garage across from the Ranger Station.



On a Yuba River crossing near Cisco Grove, a bridge has two logos painted on the side. The first photo shows the west side, while the second shows the east side. The bridge and our logo got “tagged.” Someone painted over it with grey paint and left our logo, which had some color on it. Monica made a fix, and the logo looks good once again.

(continued next page)



A new stenciled logo was installed on a bridge at Rainbow, near the famous Rainbow Lodge. This section of the Lincoln Highway is hard to find, but the logo can be spotted from Hampshire Rocks Road, as seen below.

Below is Monica next to our latest sign installation in the town of El Dorado. The next photo shows the sign at Greenstone Cut-off. Fortunately, the Lincoln Highway followed the Overland Emigrant Trail and Pony Express in this area, so we could “piggy-back” on the installed sign.



(continued next page)



The sign that has been attached to the Echo Summit Lodge had started to fade. This is a popular place to take photos as you have a great view of Meyer's and Lake Tahoe far below. The old sign was removed and a new one placed. Be sure to take Johnson's Pass Road over the summit to experience a slice of history and beauty. The photo above shows Monica standing next to the lodge. Photo at left is the old sign, new one at right.



(continued next page)



Our last sign project was to replace a missing sign at Donner Memorial State Park. It turns out the sign was just temporally missing as when we showed up, it was on the post dangling at an angle. So we stood it upright and screwed it in. Looks ready for another summer.



The California Chapter of the Lincoln Highway Association needs funds to buy more signs, paint for logos, and continue our promotion of the historic highway. If you would like to help out, we could always use the money for our projects. We are close to running out of our last batch of signs and need to purchase more. We are looking for donations to continue our efforts. If you feel so inclined, head over to our donation button and give what you can. Your donations are used only for our signage, brochures, and paint. [Go here](#), then click the yellow box at the far left of the page. Thanks!



Your invited!
California Lincoln Highway Association's
"Lunch on the Lincoln"
2021 Summer Meeting

When: Saturday July 10th, 11:30–3pm
Where: Moe Mohanna Event Center,
2021 Old Bass Lake Road, El Dorado Hills

Enjoy lunch and the sweeping views of the Sacramento Valley. Then, explore the longest remaining section of Lincoln Highway concrete in California.

Directions: US 50 to Bass Lake Road (Exit 32), head north, turn left on Old Bass Lake Road, then turn left at the driveway with a row of Italian Cypress. Parking behind building.

Agenda: Officer and Committee Reports, National Conference update for Illinois & California: Lincoln Highway Byway (California), Folsom Signage project, Western Terminus Marker, Placerville donated 1928 concrete markers, and future in-person chapter meetings.

Members & guests attending the buffet lunch need to e-mail Joel Windmiller at joelwindmiller@att.net with a count of lunch attendees.

www.lincolnhighwayassoc.org



LINCOLN HIGHWAY ASSOCIATION
CALIFORNIA CHAPTER



Lincoln Highway Association
CALIFORNIA CHAPTER



President's Report

Placerville, Ca



Joel Windmiller
President

As California reopens after the pandemic of 2020, California Chapter will hold its first in-person meeting since January 2020 meeting held at the historic Smith Flat House just east of Placerville, California, along the Pioneer Alignment of the Lincoln Highway.

Chapter Meeting July 10th will be held at the Moe Mohnanna Event Center along Old Bass Lake Road concrete from 1916 poured by prison labor from Folsom State Prison. Our host will provide a buffet lunch for everyone, along with a Lincoln Highway video and poster board presentations for everyone to view and enjoy. Saturday, May 26th, traveled to San Francisco to inspect and clean the Western Terminus Marker [#2436], which stands in Lincoln Park near the Palace of the Legion of Honor building. Following marker one of the most photograph Lincoln Highway Marker along the route from New York to San Francisco. Article with photo's in this issue of the "Traveler."

(continued next page)

Presidents Report



(Continued from previous page)

Contacted City of San Francisco Public Works and Parks Department and Muni Transportation on the 1928 marker [#2432] at the bus stop on California Street near the bus Stop between 14th Street and Park Presidio Blvd California 1. Subject maintenance on the marker cleaning and painting plus set up a way to protect the marker from tagging or damage. Chapter was given permission to maintain the marker. Still working on protecting the marker. Will update members on progress in my next report. Article with photo's in this issue of the "Traveler".

Gene Rabel and his wife began a cross-country road trip in early 2021 in New York. They were searching for as many Lincoln Highway concrete markers original and replicas posted along the route. They were meeting and talking with hundreds of people during their trip. On May 17th, Gene stopped by my place to view the collection of donated markers and had an interesting discussion about their journey and the history of the highway.

I have received no updates from Kevin Shawver on the status of the Lincoln Highway Byway in California. Kevin has been diligently trying to contact California State Assemblyman Carlos Villapudua 13th District [Stockton].



Lincoln Highway Association
CALIFORNIA CHAPTER
Joel Windmiller President LHA

California's Neglected "28" Marker



Joel Windmiller
California Chapter President

HISTORY:

In 1928 Gael Hoag, Field Secretary for the Lincoln Highway Association surveyed five concrete markers locations within San Francisco. Between Hyde Pier and Lincoln Park. Lincoln Highway Marker 2430 Hyde & Beach near the Cable Car turnaround & Ghirardelli Square. Two markers along California Street at Funston Ave NE corner marker 2431, Just one block west location of marker 2432 California Street at 14th Ave SW corner at the Muni bus stop. El Camino Del Mar at 32nd Ave markers 2433 & 2434 in historic Sea Cliff. The neighborhood was founded in 1913 and has had famous residents, including Ansel Adams landscape photographer & environmentalist, Larry Bear, SF Giants CEO, Guitarist Kirk Hammett & Paul Kantner, Actors Cheech Martin, Sharon Stone, and Robin Williams. The Western Terminus Marker (2435), located near the fountain and the Palace of the Legion of Honor building dedicated in 1924. The Palace was modeled after a similar structure at the 1915 French World's Fair. Alma Spreckels, the wife of sugar magnate Adolph B Spreckles, received the French Government's permission to recreate the building in memory of 3500 California soldiers who lost their lives on the battlefields of France during WW1.



(continued next page)

(continued from previous page)

Marker 2432 California Street at 14th Ave beside the Muni Bus Stop has seen better days used by people waiting for the next bus to lean against sit there morning coffee cup on. Bird's land and leave their mark on the marker. Paint has peeled and fallen off salt air has taken its toll on the surface of the concrete making it ruff and worn. Marker last maintenance was completed back in 2002 by then Chapter President Norm Root. Contacted SF Public Works Department and SF Muni asking which department is responsible for the area around the marker. One of the goals of the board of the California Chapter is to work with local historical societies, Government agencies before projects begin to preserve the Lincoln Highway. I hope to restore marker 2432 soon with the City of San Francisco's approval.



Still standing after all these years!

Western Terminus Marker Clean-up April 24th

Written by Joel Windmiller Chapter President



Before

Saturday, April 24th, I traveled to San Francisco to inspect and clean the Western Terminus Marker, which stands in Lincoln Park near the Palace of the Legion of Honor building. Following marker one of the most photograph Lincoln Highway Marker along the route from New York to San Francisco.



After

It was placed at its current location back in 2002 for the California Conference held in

Sacramento by the California Chapter. California Chapter contacted San Francisco Parks and Recreation Department concerning the area around the marker. After the winter rains, ends, and spring arrives, the weeds and grasses start to grow and obscure the marker. They were making it difficult to view and photograph. Chapter requested that the City trim the weeds and grasses behind the marker, restoring the city and golf course view.



Before

Discovered the monument was covered by mold and dirt, scrubbed the marker with soap and water, then sprayed a mold preventive agent to prevent the molds return.



After



Big Bend, a summer time favorite



Monica and Trey

When the temperatures start rising at our home in the foothills, Monica and I like to drive up the "high country" where the air is cooler, and nature's beauty rejuvenates. From Auburn to Truckee, the route we take is one of the premier road trips in California. We try to stay on the Lincoln Highway when possible as it passes through some remarkable history and avoids Interstate 80 with its large trucks and high speeds.



Along the way, we stop to take in Big Bend, a spot along the road deep in California's transportation history. The above photo, taken by TC Wohlbrück, shows Big Bend during the Lincoln Highway era. We are looking east, with the road heading off to the right and the ranger station straight ahead.

(continued next page)

Adventures in California History

(continued from previous page)



The same location today is shown in the photo at left. The photo is taken from "Old Wagon Road," where it meets Hampshire Rocks Road. Old Wagon Road is the Emigrant Trail and Lincoln Highway. We can see the old road just up ahead, veering to the right. There is still a ranger station off to the left. Before it was Hampshire Rocks Road, this stretch of Highway 40, built in the early 1930s, improved on the older Lincoln Highway.

The photo at right shows the old road just a few yards off Hampshire Rocks Road. The road goes about another 1/4 mile, and then rejoins the modern highway.

You can see a 1999 replica Lincoln Highway marker at right, as well as a sign explaining the routes importance in this area.



(continued next page)

Adventures in California History

(continued from previous page)

A little further up Hampshire Rocks Road from the Ranger Station is the Rainbow Lodge, a historic stop along old Highway 40. On the opposite side of the road is a hidden bridge that served the Lincoln Highway. This old road was originally part of the Dutch Flat Donner Lake Wagon Road, built by Central Pacific in the 1860s to carry material for the Transcontinental Railroad.



While Monica and I were visiting we painted a Lincoln Highway "L" on this historic bridge. It was nice and cool in the shade, though we were glad to have brought the mosquito repellent. It took about an hour to do the painting. You can see Monica in the above photo working on the logo.



The photo at the left shows the completed logo. The road continues about 100 yards to a long-gone bridge site over the S. Yuba River.

There are several cabins in the area, and one of the residents was quite surprised and happy to find out the history of their "happy place."

(continued next page)

Adventures in California History

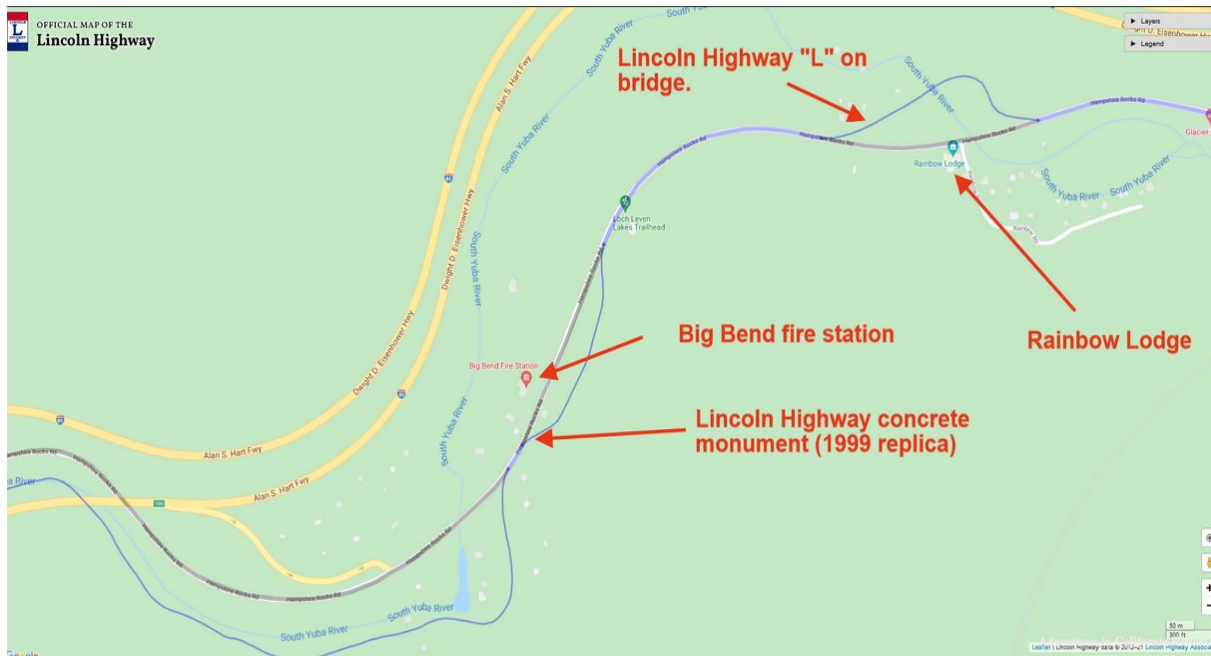
(continued from previous page)



Local resident Bill Schimmelman approves of the addition.



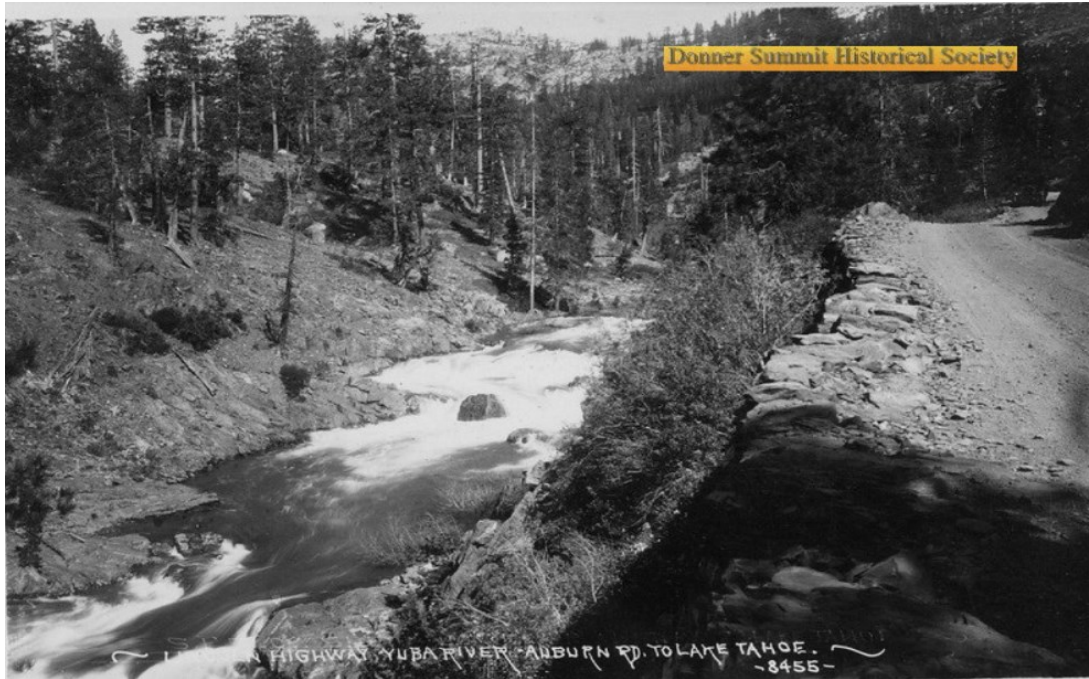
1915 Auto on a bridge at Big Bend



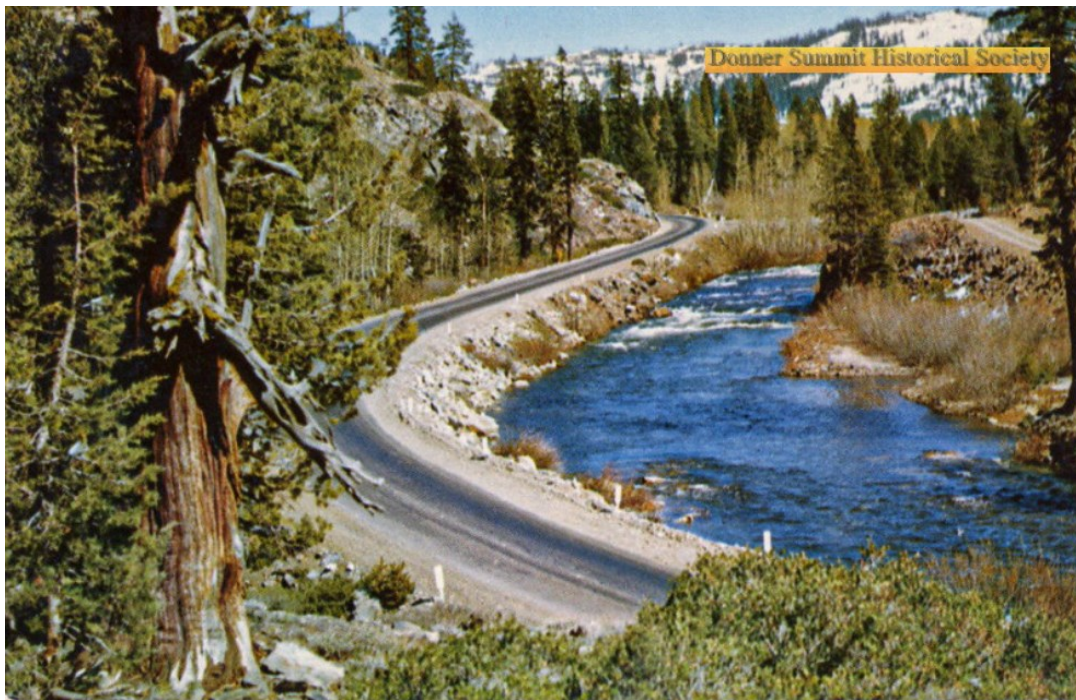
Map of location.

Adventures in California History

(continued from previous page)



Near Big Bend taken from the Lincoln Highway, 1920s.



Same scene, 1953, except we now see Highway 40, Hampshire Rocks Road, at left.

There was a time...

...when roads and highways used logos and names rather than numbers. These pole markers guided motorists or "autoists" as they traveled to their destination. The emblem would be either painted on telephone or telegraph poles or wrapped around and secured in the case of metal signs. You would find them where a critical turn was needed or just to let you know you were on the right path. The California Lincoln Highway Association carries on the tradition today.

HIGHWAY POLE MARKERS									
SHOWN IN RED ON THE UNITED STATES MAP (Pages 4-5) AND NUMBERED AS BELOW — KEYED TO FIT MAP.									
 ALBERT PIKE HIGHWAY NO. 2 Index G-11	 ARROWHEAD TRAIL NO. 3 Index F-4	 ATLANTIC HIGHWAY NO. 4 Index F-13	 ATLANTIC- PACIFIC HIGHWAY NO. 5 Index F-14	 BANFF GRAND CANYON ROAD NO. 6 Index C-4	 BANKHEAD HIGHWAY NO. 7 Index H-11	 BLACK HILLS SIOUX TRAIL NO. 8 Index E-3	 BUFFALO HIGHWAY NO. 9 Index C-7		
 CALIFORNIA BANFF-B-LINE HIGHWAY NO. 10 Index C-1	 CHI. B.H. & Y.P. BLACK-YELLOW TRAIL NO. 11 Index D-11	 CHICAGO, K. O. & GULF HIGHWAY NO. 12 Index E-11	 COLORADO TRAIL NO. 13 Index H-9	 CUSTER BATTLEFIELD HIGHWAY NO. 14 Index C-8	 DALLAS CANADIAN DENVER NO. 15 Index D-3	 DETROIT LINCOLN DENVER NO. 16 Index E-9	 DIXIE HIGHWAY NO. 17 Index H-13		
 DIXIE OVERLAND HIGHWAY NO. 18 Index J-11	 EVERGREEN NATIONAL HIGHWAY NO. 19 Index B-3	 GEORGE WASHINGTON NATIONAL NO. 20 Index E-10	 GEYSERS GLACIERS HIGHWAY NO. 21 Index B-6	 GOLDEN BELT HIGHWAY NO. 22 Index F-9	 GRANT HIGHWAY NO. 23 Index E-11	 GREAT PLAINS HIGHWAY NO. 24 Index I-3	 JACKSON HIGHWAY NO. 25 Index G-13		
 JEFFERSON HIGHWAY NO. 26 Index G-10	 KING OF TRAILS NO. 27 Index F-10	 LAKES TO GULF HIGHWAY NO. 28 Index E-11	 LINCOLN HIGHWAY NO. 29 Index E-9	 LONE STAR ROUTE NO. 30 Index G-12	 MERIDIAN HIGHWAY NO. 31 Index E-10	 MISSISSIPPI RIVER SCENIC HIGHWAY NO. 32 Index E-12	 MISSISSIPPI VALLEY HIGHWAY NO. 33 Index E-12		
 NATIONAL OLD TRAILS HIGHWAY NO. 34 Index F-12	 NATIONAL PARKS HIGHWAY NO. 35 Index B-9	 NATIONAL PARK TO PARK HIGHWAY NO. 36 Index D-4	 NEW SANTA FE TRAIL NO. 37 Index G-9	 OLD SPANISH TRAIL NO. 38 Index J-12	 OREGON TRAIL NO. 39 Index B-3	 OZARK TRAILS NO. 40 Index G-11	 PACIFIC HIGHWAY NO. 41 Index F-7		
 PIKES PEAK OCEAN TO OCEAN HIGHWAY NO. 42 Index F-12	 RED BALL ROUTE NO. 43 Index F-12	 ROOSEVELT MIDLAND HIGHWAY NO. 44 Index G-11	 SOUTHWEST TRAIL NO. 45 Index G-11	 THEODORE ROOSEVELT INTERNATIONAL NO. 46 Index A-8	 TWIN CITY BLACK HILLS YELLOWSTONE NO. 47 Index C-8	 UNION PACIFIC HIGHWAY NO. 48 Index F-9	 YELLOWSTONE TRAIL NO. 49 Index B-9		



MARK YOUR 2021 and 2022 CALENDAR

Saturday July 10, 2021 12:00 Noon	State Chapter Meeting Moe Mohanna Event Center
Saturday October 12:00 Noon	State Chapter Meeting (Location TBA)
Saturday January 12:00 Noon	State Chapter Meeting (Location TBA)
Saturday April 12:00 Noon	State Chapter Meeting

NOTE: Announcement of Chapter Meeting locations are mailed via postcard to all current members approximately 2 weeks prior to the actual date. They are also posted on the California Chapter web site. Contact Joel Windmiller regarding the mailing of postcards.

NOTE: For information on Car Cruise and Sports Leisure Bus Toure, contact Paul Gilger. paulgilger@att.net or Joel Windmiller, joelwindmiller@att.net

NOTE: For additional information on the 2022 LHA Conference go to www.lincolnhighwayaccoc.org

NOTE: Meetings are preceded by lunch which is scheduled for 12:00 noon, unless otherwise noted. Official meetings start at 1:00pm





LINCOLN HIGHWAY ASSOCIATION
CALIFORNIA CHAPTER

P.O. Box 447
 Carmichael, CA 95609

Joel Windmiller *
 Chapter President
 Marker and Membership Chairman
 916-208-9790
 joelwindmiller@att.net

Trey Pitsenberger *
 Chapter Vice President
 Field Secretary of Signage
 Newsletter Editor
 530-334-6040
 trey@pitsenberger.com

Neil Rodrigues *
 State Director
 Promotional Chairman
 408-374-6288
 neil_rodrigues@yahoo.com

Grant Gassman *
 Treasurer
 530-756-5507
 grant.gassman@att.net

Paulette Johnston *
 Secretary
 916-202-2724
 Pj12thrnte@sbcglobal.net

Michael Kaelin
 Field Rep/Signage
 209-835-1143
 mkaelinpl&s@yahoo.com

Gary Kinst
 Chapter Historian
 707-374-2568

James Lin
 National & State
 Webmaster
 lincolnhwy@jameslin.name

* Indicates Board Member

California Chapter LHA Web Site Maintained by James Lin
 Log in at; <http://www.lincolnhighway.org/ca>





LINCOLN HIGHWAY ASSOCIATION
CALIFORNIA CHAPTER

Quarterly Chapter Meeting Minutes — Saturday, April 3, 2021

Online video conference via Zoom

1. Meeting Called to Order at 1:01 PM

2. Introductions

- a. **Jack Ignatowicz:** President-elect of Rotary Club of Pocket/Greenhaven. Don Yuma was going to send a PowerPoint presentation about the Lincoln Highway. Has become a member recently. Would love to have a Zoom speaker. Trey Pitsenberger will give a presentation during a future meeting. Welcome Jack!
- b. **John Jackson** (National Treasurer): Welcome!
- c. **Ray Johnson:** Joined recently. Welcome. His great-great grandfather was in the 1919 military convoy and gave speeches when they arrived in a town.

3. Approval of January 2021 meeting minutes

- a. Motion to approve the January Chapter Minutes by Paul Gilger. Seconded by Jeff Peterson. Minutes are approved.

4. Officer, Staff, & Committee Reports

a. Neil Rodrigues: State Director

- i. A big *Thank You* from me to Joel Windmiller for continually investigating and sharing historic Lincoln Highway photos and facts of the road and surrounding areas within California
*Joel shared while reading the notes: OpenSFHistory has an extensive library of historic photos (from the 1850s to the 1970s) that have been geotagged with their location, and you can find images based on their location by looking at their map: <https://opensfhistory.org/maps/>
- ii. Another big *Thank You* to Jimmy Lin for implementing the donation button on the LHA Webpage (from a suggestion from the California chapter and approval from the LHA National board). What a great step forward to helping the LHA fund preservation, promotion and public education projects.
- iii. Regarding LHA purchasing original 1928 LH concrete markers: I have not heard any word on this topic since the last National LHA Board teleconference. The next board meeting will be held next week (April 11–17) and I will make a point to raise this topic again, if it's not on the agenda.
- iv. LHA 2022 and 2023 National Conferences: I have no new inputs since the last National Board meeting indicating the year slip. Updated information should surface at next week's LHA National Board Teleconference. Next year's Joliet conference will start on June 20.
- v. Please consider using and joining our LH California email distribution listing: LHA CA@Groups.io. This is a tool that we all can use to easily share LH information with others in the group. Email Neil or access through the web at <https://groups.io/g/LHACA>

(continued next page)



LINCOLN HIGHWAY ASSOCIATION
CALIFORNIA CHAPTER

(continued from previous page)

- vi. I'm working on creating a brochure of a present-day Lincoln Highway "Wish Bone Drive Tour" from Sacramento, up the old US 40 alignment, around Lake Tahoe, and back on US 50. I will report progress at the July meeting.
 - *This will consist mainly of a well detailed map with clear directions and points of interest for car clubs and enthusiasts to enjoy some of the most scenic portions of the LH route – from, to, and around Lake Tahoe.
 - *Car clubs often approach me with interest and requests for specific drive tour information of the Lincoln, especially into the Sierras and Lake Tahoe.
 - *Although I point them to our national map, many want a well detailed and clearly defined paper map, similar to the paper map Paul Gilger last published in 2010. Printing our LHA Google map loses detail.
 - *Currently, our road signage does not help motorist easily follow and stay on the many turns and directions needed within the California LH.

b. Joel Windmiller: President

- i. Clarksville Days has been cancelled due to the pandemic. Hoping to be back in 2022, so they would like us to keep this date open for next year.
- ii. Question about clean up and tending to the highway near and around Clarksville. Trey will try contacting the Clarksville Historical Society about clean-up day.
- iii. Trey has been doing some research in Bowman: the location of a third bridge crossing the Southern Pacific Tracks. If you have any evidence, please contact Trey.
- iv. Shout out to Trey for working on getting City of Folsom signed.
- v. Jimmy and Trey have the donation membership feature which allows you to renew your membership and donate funds.
 - *John Jackson reports that the donation buttons for renewing memberships and new memberships is a success.
- vi. Josephine Marie is starting a project to [paint silos along the Lincoln Highway](#), starting in Colton, Nebraska.
 - *Joel forwarded it to Kay, who suggested that she start a GoFundMe account.
- vii. Kevin Shawver: Discussing with Carlos Villapudua (State Assemblymember, 13th District, including Stockton) to get state historical byway status for the Lincoln Highway, to help get the LH signed.
- viii. Placerville Markers: donation of two markers damaged by snowplows. Trying to get the bottom of the posts recast and the markers ready to be put up in El Dorado County at a historical location.

(continued next page)



LINCOLN HIGHWAY ASSOCIATION

CALIFORNIA CHAPTER

(continued from previous page)

c. Trey Pitsenberger: Vice President/Signage/Traveler

- i. Folsom Project Update: it's a go with Folsom. Trey showed a PowerPoint slide deck to the City of Folsom, which he shared a bit of with us.
 - * Folsom will manufacture the signs, according our specs, and install them.
 - *The city also thought of having a road stencil of the Lincoln Highway to put on Sutter Street.
- ii. Several years ago, Gary Kinst wrote a book about the LH in California, as part of the *Images of America* series by Arcadia Publishing. However, the royalties were about \$2,000 in order to get the book published, which meant we tabled the project. Trey would like to resurrect the project, either by finding alternative photos that would be less expensive, or by raising funds to publish the book.
 - *John Jackson suggested contacting Russ Rein, who has an extensive historic image and postcard collection, and may have some we can use in the book.
 - *Jimmy Lin: all works first published or released before January 1, 1926 are now in the public domain, which means a lot more images are in the public domain now than when Gary first worked on the book.
 - *Kendra Stoll: Be careful about the public domain. At Caltrans, you would still have to get permission to publish the photographs because of how you are using them for commercial use.
- iii. Trey talked about the new donation button. He brought up the idea of adding a new page to the chapter's website listing the projects we would like to do, which would give people a more concrete idea of what their donation dollars would be going to.
 - *Paulette Johnston made a motion to create such a new page. Seconded by Trey Pitsenberger. No discussion. Motion passed unanimously
- iv. Suggestion: addition to our website for municipalities to find information about signing the Lincoln Highway in their area. What's expected of each town? What is our role as an Association?
 - *Perhaps we could develop the idea of a "Lincoln Highway Community", similar in spirit to the Tree City USA program by the Arbor Day Foundation.
 - *John Jackson and Trey Pitsenberger will bring this idea to the national marketing committee, to look into developing guidelines for becoming a Lincoln Highway Community.
- v. Traveler: If you have any submissions, Trey would happily accept them for the next issue.

(continued next page)



LINCOLN HIGHWAY ASSOCIATION
CALIFORNIA CHAPTER

(continued from previous page)

d. Grant Gassman: Treasurer

- i. Additions: National, \$234.
- ii. Balance: Contact Chapter for details

e. Paulette Johnston: Secretary

- i. No report submitted.

f. Gary Kinst: Chapter Historian

- i. Still sheltering in place.

g. Jimmy Lin: Website

- i. Shared changes in traffic in the website. Compared to this quarter last year, traffic in general is up, except for the map, which is flat. Also, there is strong growth in the number of members in the chapter's Facebook discussion group.
- ii. An upcoming book titled *The Lincoln Highway* by Amor Towles could be responsible for the increase in hits on March 23.
- iii. Reviewed the online donation button.
- iv. Discussion: Jimmy would like to add the chapter's tourist brochure to the chapter website.

h. Speakers/Presentation

- i. Trey: Folsom discussed above.
- ii. A PBS show concerning people who are helping to care for history filmed Monica and Trey doing some clean up and marking of the Lincoln Highway.

i. Tours: Mark Hoffman

- i. Had trouble logging in from Seattle. Will table for next meeting.

5. New Business

- a. Shrubs around the area of the Terminus Marker and plaque in San Francisco needs to be trimmed back, to restore the view of the city and golf course. Chapter will contact the San Francisco Recreation and Parks Department.
- b. Trey suggested simply removing the shrubs.

6. Meeting Adjournment

- a. Paul Gilger moved to adjourn the meeting. Seconded by Greg Gassman. Meeting adjourned.

*Respectfully submitted by
Paulette Johnston, Secretary
April 3, 2021*

Edited by Joel Windmiller and Jimmy Lin

The Lincoln Highway, your road to adventure!

**THE
CALIFORNIA
CHAPTER,
LINCOLN
HIGHWAY
ASSOCIATION**

P.O. Box 447
Carmichael, CA 95609



There's a lot to see and do on the Lincoln Highway. Whether you're a resident of one of the Lincoln Highway states, a visitor or someone interested in learning more about the Lincoln Highway, the LHA is for you! Many sections of the right-of-way are still in place waiting for you to explore them...

**To learn more about joining us, click the
Lincoln Highway logo below.**



Click the above logo to learn more!

**Resources for Lincoln Highway enthusiasts
(click the link to be taken to the site)**

[The Lincoln Highway in the Golden State on Facebook.](#)

[California Lincoln Highway Association on Facebook](#)

[The Lincoln Highway on Facebook](#)

[The Lincoln Highway on Donner Summit, a photo collection from the Donner Summit Historical Society](#)

[Adventures in California History, Lincoln Highway posts](#)

[The official Lincoln Highway Map](#)